



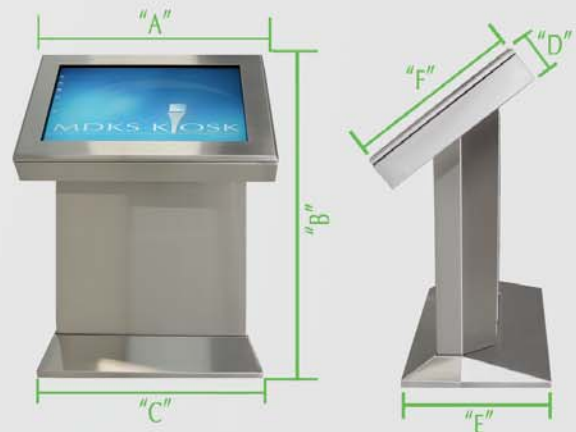
The **K-PILAR** is an Indoor Kiosk. Available sizes are standard 32", 42", 46" or 55". All indoor units are liquid splash/spill proof. Front access is through a secure hinged door that opens downward allowing ample space to everything.

Built for low maintenance, heavy abuse. The KPilar is also wheelchair accessible and like all of our kiosk, this unit is fully expandable to accept just about any peripheral.

MDKS' Indoor Touch Screen Kiosks are manufactured for a trouble-free operation. All components are industrial grade components taking these units to an impressive MTBF value. All units are complete with heavy-duty baseplates. Optional over sized baseplates with rear kick wheels are also available.



**KIOSK DIMENSIONS**



| SIZE | A     | B | C     | D    | E     | F     |
|------|-------|---|-------|------|-------|-------|
| 32"  | 34.30 |   | 32.00 | 4.89 | 18.00 | 20.46 |
| 42"  | 45.15 |   | 32.00 | 6.00 | 18.00 | 27.96 |
| 46"  |       |   |       |      |       |       |
| 55"  |       |   | 38.16 |      | 24.00 | 38.16 |

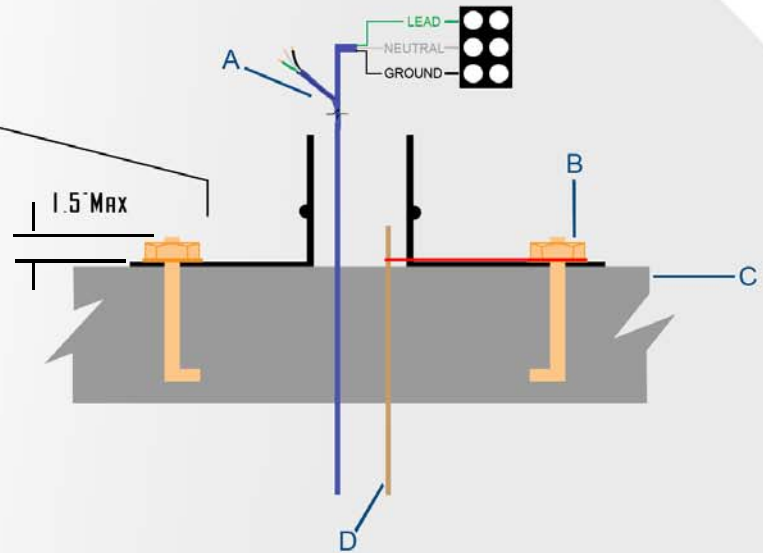


**Power Requirements**  
 - 110VAC/4.6 A, 22VAC/ 2.3A INPUT. INTERNAL 12VDC - 24VDC Universal auto-switching power supplies inside.  
 - UPS Power unit with battery backup is best placed at power source location by customer.

### Typical Installation

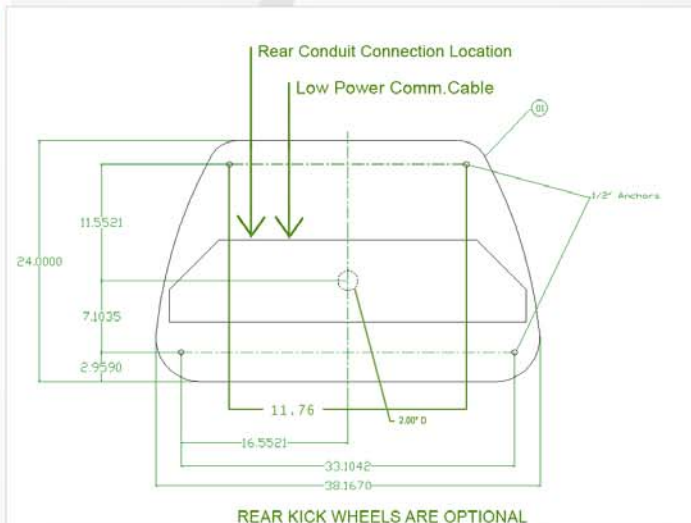
**A**

- A.** Input power lead to be supplied by customer. See electrical handbook for length/gauge. All units are shipped with temporary power cord.
- B.** Recommendation for existing slabs/marble. Use Chemical Anchor 1/2" Foundation Bolts nuts and lock washers 4 places.
- C.** Concrete base min. 4" thick. Slab must be level/flat.
- D.** 6 Ft. Grounding Rod with copper connecting wire to 1 foundation bolt for "best" grounding.

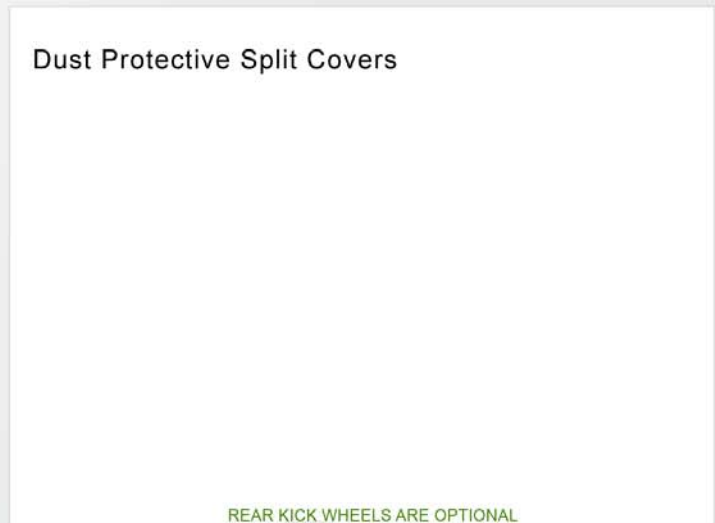


### Foundation / Base Plate

**B**



### Dust Protective Split Covers



**NOTE:** The main Power Supply Cable must be wired through a conduit jacket (min. height of 18" from top of concrete pad) This conduit jacket is passed thru the 2.0" diameter access hole located on the base plate "B". The cable must be 48" (4'-0") from top of concrete foundation pad connecting to a (3) post terminal strip, "L", "N", "Gnd" clearly marked, located on the electrical panel of your kiosk. All access holes, including bottom base holes must be completely sealed/filled with water proof material such as silicon. This installation should be performed by a Certified Electrician.

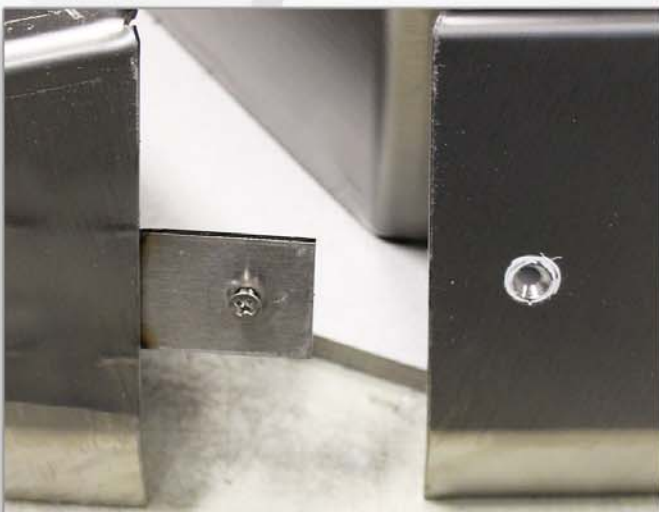




1. Add shortest Base Plate cover to the front of your kiosk.



2. The longest Base Plate cover should be added to the back of your kiosk.



3. Remove the screw in order to line up your holes. Then screw your two base plate covers together.